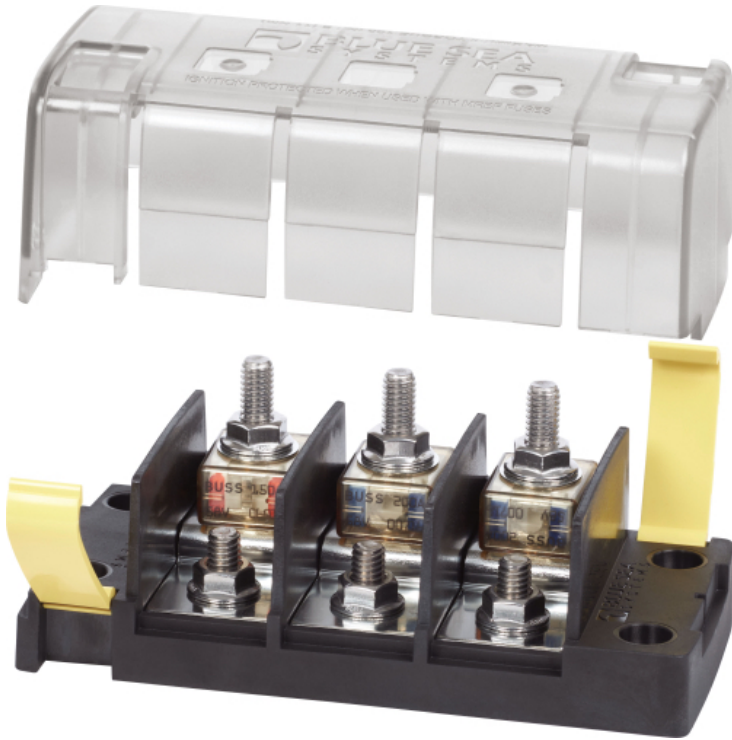


# 5196 MRBF Surface Mount Fuse Block by Blue Sea Systems



**Price: CAD \$79.99**

**SKU:** BSS5196

**Product Categories:** [Breakers](#), [Shop](#), [Wiring & BOS](#)

**Product Tags:** [400A](#), [canada](#), [DC-FA-400](#), [fuse](#), [fuse assembly](#), [fuse bar](#), [post](#), [samlex](#), [single pole](#)

**Product Page:** <https://www.modernoutpost.com/product/5196-mrbf-surface-mount-fuse-block-by-blue-sea-systems/>

## Product Summary

5196 MRBF Surface Mount Fuse Block by Blue Sea Systems. This is the common source model.

## Product Description

5196 MRBF Surface Mount Fuse Block by Blue Sea Systems. This is the common source model.

Blue Sea 5196 Features...

Accommodates three [MRBF fuses](#) for consolidated high amperage circuit protection

- Safely provides power to three loads from a single source
- Clip-on insulating cover satisfies ABYC/USCG insulation requirements
- Versatile wiring options allow all wires to come out a single side
- Label recesses accommodate Blue Sea Systems square format labels for easy circuit identification
- One-piece stainless flange nuts ensure safe, secure connections
- Fuses sold separately

Blue Sea 5196 Specifications...

**Maximum Amperage :** Maximum amperage ratings are dependent on use of appropriately sized fuses and wire for a given application.

300A per block

240A per circuit Using 4/0 Cable  
Maximum Voltage : 58V DC  
Mounting : Surface Mount M5 (#10)  
Maximum Torque : 100 in-lb (11.3 Nm)  
Terminal Stud Size : M8 (5/16"-18)  
Weight : 1.20lb (0.54 kg)

## Product Attributes

- Dimensions: 1 &times; 1 &times; 1 cm
- Weight: 0.6 kg