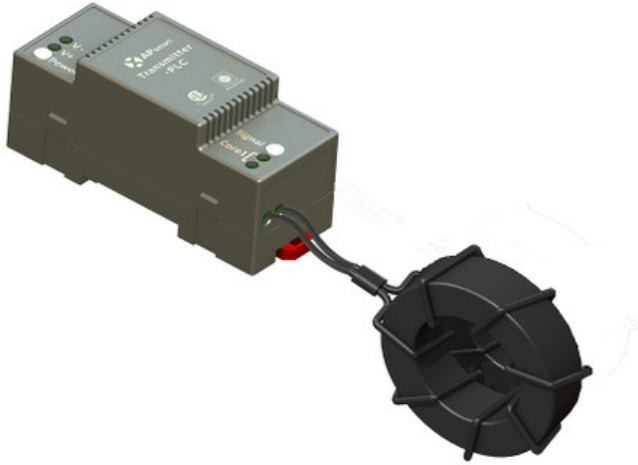


APSmart Single-Core RSD Transmitter by APSystems



Price: CAD \$89.99

SKU: APSMART-TRANS-SINGLE

Product Categories: [DC Optimizers](#), [Inverters](#), [Rapid Shutdown](#), [Shop](#)

Product Tags: [apsmart](#), [apsmart canada](#), [apsmart transmitter](#), [canada](#), [plc](#), [rapid](#), [rapid shutdown](#), [rsd](#), [signal](#), [transmitter](#)

Product Page:

<https://www.modernoutpost.com/product/apsmart-single-core-rsd-transmitter-by-apsystems/>

Product Summary

APSmart Single-Core RSD Transmitter by APSystems. This SunSpec Certified device sends a 'keep alive' signal through your DC solar array cables. When proper voltage is not detected the Transmitter stops sending the keep-alive signal to the RSD device, initiating module-level rapid shutdown sequence.

Product Description

APSmart Single-Core RSD Transmitter by APSystems. This SunSpec Certified device sends a 'keep alive' signal through your DC solar array cables. When proper voltage is not detected the Transmitter stops sending the keep-alive signal to the RSD device, initiating module-level rapid shutdown sequence.

For SunSpec compliance, pair this transmitter with the APSmart PLC receivers (**single** or **dual** module versions) which get placed on the back of your solar modules. The system maintains constant communication between the RSD and Transmitter-PLC, constantly monitoring voltage and current.

Model: 406001

This 29mm ID single-core model is suitable for up to 15 PV strings.

APSmart Single Core RSD Transmitter Features

Safe

Meets NEC 2017 (690.12) requirements

Meets SunSpec requirements

Reliable

Transmitter-PLC provides heartbeat signal to RSD-S-PLC. Signal stops when AC power is absent

Single Core Transmitter Specifications In Brief

Electrical

Input Voltage : 12VDC

InputCurrent : 0.8A

Communication Signal : PLC

Power Supply (Residential Version - not included)

Input : 85-264VAC

Output : 12VDC

Dimensions : 90mmx17.5mmx58.4mm

Note...

Many inverters offer a 12VDC auxiliary power port which can act as the power supply for this transmitter. If not, then we recommend the complete Outdoor Kit which includes the transmitter, power supply, and IP65 hinged enclosure box.

Core Data (29mm Core)

Max Current : 150A

Max System Voltage : 1500VDC

Internal Opening for Wires / Outside Dimensions : ~29mm/65mm

Max Supported PV Modules per String : 30 modules

Number Of Strings Per Core

DC Cable Diameter (without connector) :

Φ5.9mm : ≤15 Strings

Φ6.35mm : ≤15 Strings

Φ7mm : ≤14 Strings

Φ8.6mm : ≤10 Strings

Features & Compliance

Safety : NEC2017 & 2020 (690.12); UL1741; CSAC22.2 No.330-17

EMC : FCC Part 15; ICES-003

SunSpec Certified (when used with APSSmart receivers)

Downloads

[RSD Transmitter Spec Sheet\]](#)

Visit the [APSSmart website\]](#) for more info, user manuals, and installation guides

Other Available APSSmart Options...

Outdoor Kit - Single Core (single core, model 408006)

- Includes PLC transmitter unit, power supply, and latched/hinged IP65 outdoor enclosure

Dual-Core Transmitter Only (model 406000)

Outdoor Kit - Dual Core (dual-core, model 408005)

- Includes PLC transmitter unit, power supply, and latched/hinged IP65 outdoor enclosure

Product Attributes

- Dimensions: 1 × 1 × 1 cm

- Weight: .4 kg