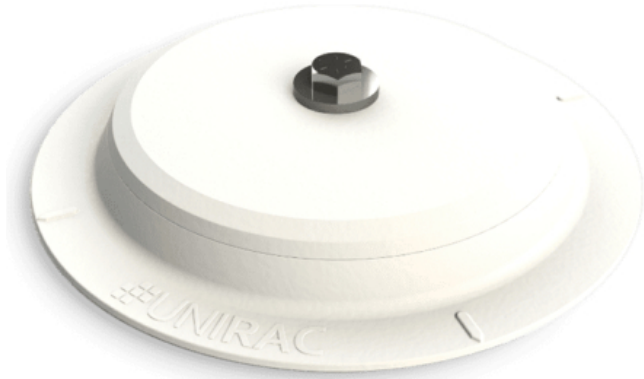


FLASHLOC RM : Flat Roof Attachment Kit (10-Pack) by Unirac



Price: CAD \$899.00

SKU: URFLASHLOC-RM

Product Categories: [Flat & Low-Slope](#), [Flat Ballasted & Low-Slope](#), [Mounts](#), [Rooftop Attachments](#), [Rooftop Racking Systems](#), [Shop](#), [Unirac](#)

Product Tags: [anchor](#), [attachment](#), [canada](#), [flashloc rm](#), [flashloc rm canada](#), [low slope roof](#), [low-slope](#), [unirac canada](#), [unirac flashloc](#)

Product Page:

<https://www.modernoutpost.com/product/flashloc-rm-flat-roof-attachment-kit-by-unirac/>

Product Summary

Unirac's FLASHLOC RM is a lightweight, durable, powder-coated cast aluminum roof attachment solution that provides fast, easy installation and helps save labor cost. Huge uplift strength. Exceptional water-tight seal. FLASHLOC RM is compatible with most roofing materials and is applicable for almost all solar racking. Rigorous mechanical, sealing, and ease-of-install testing has been successfully completed for assurance of long-term reliability. 25-year warranty.

SOLD IN BOXES OF 10

Product Description

Unirac's FLASHLOC RM is a lightweight, durable, powder-coated cast aluminum roof attachment solution that provides fast, easy installation and helps save labor cost. Huge uplift strength. Exceptional water-tight seal. FLASHLOC RM is compatible with most roofing materials and is applicable for almost all solar racking. Rigorous mechanical, sealing, and ease-of-install testing has been successfully completed for assurance of long-term reliability. 25-year warranty.

SOLD IN BOXES OF 10

Roof Types

Thanks to Unirac's unique Flashloc™ technology, you can install Flashloc RM on most roof types at speeds unmatched by any other attachment. Compatible with Mod Bit, Asphalt, BUR, PVC, EPDM, PIB, and TPO.

No membrane heat-welding and one part for all roofs means that you'll save time during installation. The same ChemLink sealants used across the roofing industry for decades cut the time you'll spend on the roof. And you'll reap the rewards of reduced attachment costs.

FLASHLOC RM Features

FLASHLOC Technology – no more membrane SKUs or heat welding
Works for all roof types – see Chemlink M-1's compatibility for details

Labor and attachment savings

Industry-leading install time

6,600-lb. uplift offset

Includes 8 fastener holes (roof-specific fasteners not included)

Attachment can accommodate roofing screw sizes #12 - #15

25-year warranty

Specifications

7.5" diameter X 0.94" height

Included hardware: 1 preassembled bolt and washer for each base

Chemlink M-1 and 1-Part included in kit

SOLD IN BOXED PACKS OF 10

Downloads

[Flashloc™ RM Brochure](#)] [Flashloc™ RM Detail Drawings](#)]

Product Attributes

- Dimensions: 1 × 1 × 1 cm
- Weight: 3.9 kg

Product Gallery

