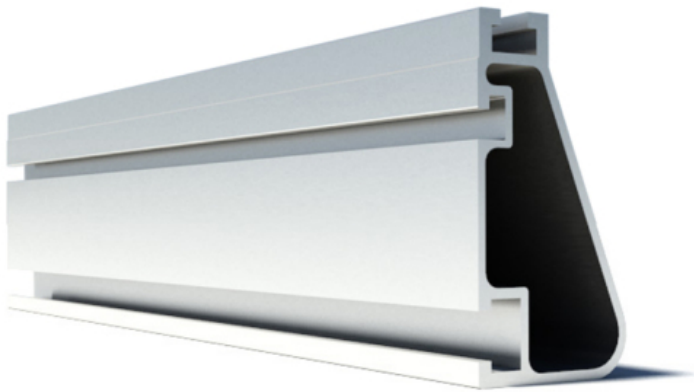


Ironridge XR1000 Rail



Price: CAD \$77.00 - CAD \$239.00

SKU: IRXR1000

Product Categories: [Rooftop Racking Systems](#), [DIY Free-Form](#), [Ground Mounts](#), [Ironridge](#), [Mounts](#), [Shop](#)

Product Tags: [canada](#), [ironridge](#), [ironridge rails](#), [ironridge xr1000](#), [ironridge xr1000 canada](#), [mill](#), [Silver](#), [xr1000](#), [xr1000 canada](#), [xr1000 rail](#)

Product Page: <https://www.modernoutpost.com/product/ironridge-xr1000-rail/>

Product Variants

- Ironridge XR1000 Rail - 66" Clear ()
- Ironridge XR1000 Rail - 84" Clear ()
- Ironridge XR1000 Rail - 102" Clear ()

- Ironridge XR1000 Rail - 132" Clear ()
- Ironridge XR1000 Rail - 168" Clear ()
- Ironridge XR1000 Rail - 204" Clear ()

Product Summary

Want a rail system for your solar array that maximizes strength, is really affordable, and actually looks good? You've found it in Ironridge and their XR series rails. This is the page highlighting the Ironridge XR1000 rails. The largest of the Ironridge XR series, and the idea choice for ground mounts and long spans between footings. Popular with van & bus rooftops too.

Product Description

Want a rail system for your solar array that maximizes strength, is really affordable, and actually looks good? You've found it in Ironridge and their XR series rails. This is the page highlighting the Ironridge XR1000 rails. The largest of the Ironridge XR series, and the idea choice for ground mounts and long spans between footings. Popular with van & bus rooftops too.

What's the XR Rail Series All About?

Ironridge created the XR series, because solar is not always sunny.

Over their lifetime, solar panels experience countless extreme weather events. Not just the worst storms in years, but the worst storms in 40 years. High winds capable of ripping panels from a roof, and snowfalls weighing enough to buckle a panel frame.

XR Rails are the structural backbone preventing these results. They resist uplift,

protect against buckling and safely and efficiently transfer loads into the building structure. Their superior spanning capability requires fewer roof attachments, reducing the number of roof penetrations and the amount of installation time.

Ironridge XR1000

Unique Shape... Exceptional Strength

The Ironridge XR1000 features a force-stabilizing curve on one side of the rail extrusion.

Sloped roofs generate both vertical and lateral forces on mounting rails which can cause them to bend and twist. The curved shape of XR Rails is specially designed to increase strength in both directions while resisting the twisting. This unique feature ensures greater security during extreme weather and a longer system lifetime.

Dimensions

Available lengths: 11', 14'

Profile Height : 3"

Profile Width : 1-5/8"

Corrosion-Resistant Materials

XR Rails are made of 6000-series aluminum alloy, then protected with an anodized finish. Anodizing prevents surface & structural corrosion, while also providing a more attractive appearance.

Compatibility With All Attachments

Ironridge XR rails are compatible with the Ironridge FlashFoot 2 roof attachment, or any others on the market such as [Quick Mount PV](#)], [S-5!](#)], and the [RT-Mini](#)].

Order the Bonded Square Bolt hardware to attach the XR Rails to any L-Foot.

Splices For Longer Arrays

The **XR1000 Series Bonded Splice** is available to join XR rails.

Rail End Caps

Finish your rail ends neatly with plastic end caps.

[Read the Ironridge XR Rail Tech Brief](#)]

...

The XR1000 : Ideal For DIY Ground Mounts

The XR1000 rails are part of IronRidge's Ground Mount System. Combine the

XR1000 or [XR100](#)] rails with locally-sourced steel pipes or mechanical tubing, to create a cost-effective structure capable of handling any site or terrain challenge. Other components include...

[Pipe-Top Caps](#)] [Rail-to-Pipe Clamps](#)] **Optional Cross Braces**

Installation is simple with only a few structural components and no drilling, welding, or heavy machinery required. In addition, the system works with a variety of foundation options, including concrete piers, ground screws, ground anchors, or ballasted skids of your creation. Compatible with soil classes 2-4.

For complete information & manuals, please consult the [Ironridge website](#)].

Product Attributes

- Dimensions: 520 × 10 × 4 cm
- Weight: 10 kg
- Length/Finish: 66" Clear, 84" Clear, 102" Clear, 132" Clear, 168" Clear, 204" Clear

Product Gallery

