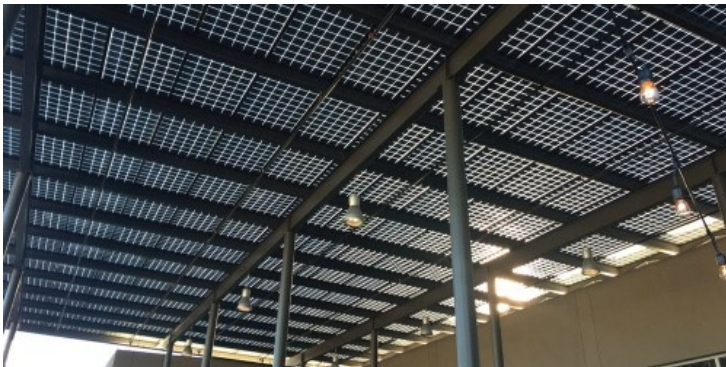


360W Lumos GSX 2.0 Bifacial Frameless Solar Module



SKU: LUMOS-GSX360-72

Product Categories: [Bifacial Modules](#), [Frameless Glass/Glass](#), [Roof / Ground / Pole](#), [Shop](#), [Solar Modules](#)

Product Tags: [2.0](#), [360W](#), [72](#), [72 Cell](#), [bifacial](#), [bifacial solar module](#), [frameless](#), [glass](#), [gsx 2](#), [gsx canada](#), [gsx series](#), [lumos](#), [lumos canada](#), [lumos gsx](#), [lumos solar](#)

Product Page:

<https://www.modernoutpost.com/product/lumos-gsx-2-0-360w-bifacial-frameless-solar-module/>

Product Summary

The Lumos GSX 360W bifacial module with integrated weatherproof mounting system is an architectural-grade solar power system for projects that care about both integrating solar into their building design, and about doing it with style.

Product Description

The Lumos GSX 360W bifacial module with integrated weatherproof mounting system is an architectural-grade solar power system for projects that care about both integrating solar into their building design, and about doing it with style.

The GSX Module System consists of the Lumos Bifacial Glass-Glass Solar Module

and GSX Mounting System. GSX Modules use bifacial solar cells allowing them to produce energy on both the sunny side and the back side of the module. The GSX Module System provides integrated weatherproofing and completely conceals junction boxes and conductors. The GSX Bifi System is unparalleled in the solar industry today.

Lumos GSX BiFi Module System

- Weatherproof - Bifacial Cells - Glass Glass Construction - PID Free - No ground lugs and no continuous module equipment ground - Completely concealed junction box and conductors - 72 Cells Bifacial Module - 360W front, with up to 558W total power output (396W IEC bifacial rating) - Updated mounting system

[Lumos GSX2.0 Datasheet](#)]

Product Attributes

- Dimensions: 1 × 1 × 1 cm
- Weight: 20 kg

Product Gallery



