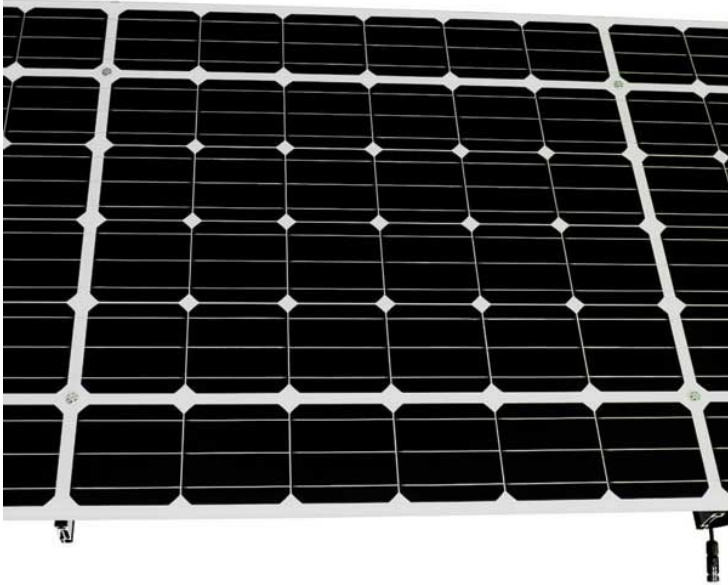


280W Lumos LSX Frameless Solar Module



SKU: LUMOS-LSX280-C

Product Categories: [Bifacial Modules](#), [Large Modules : 330W+](#), [Roof / Ground / Pole](#), [Shop](#), [Solar Modules](#)

Product Tags: [280w](#), [aesthetic](#), [canada](#), [Clear](#), [frameless](#), [glass](#), [lsx](#), [lsx canada](#), [lumos](#), [lumos canada](#), [lumos lsx](#), [lumos solar](#), [Solar Module](#), [solar panel](#)

Product Page:

<https://www.modernoutpost.com/product/lumos-lsx-frameless-solar-module/>

Product Summary

The Lumos LSX 280W solar module is the revolutionary frameless solar module that has bridged the gap between architecture and energy. LSX Frameless Solar Modules are an elegant solar generating solution for the most aesthetically conscious projects.

MADE IN THE USA!

Price includes shipping within Canada

Product Description

LUMOS

The Lumos LSX is the revolutionary frameless solar module that has bridged the gap between architecture and energy. LSX Frameless Solar Modules are an elegant solar generating solution for the most aesthetically conscious projects. The current model LSX280-60M-C frameless solar panel blends well with various roofing materials, providing a far less mechanical appearance. The dedicated LSX rail mounting system hides wiring & connections as well as the rails themselves, for a clean, low-profile installation.

MADE IN THE USA!

Price includes shipping within Canada

Lumos LSX Key Features

Frameless & Low Profile

The low profile of **LSX** frameless modules sets them apart from any other module on the market.

6mm Thick Glass

By achieving Class 4 Hail Rating the **LSX** module is the most impact resistant in the industry

Through-Bolt Mounting Method

Securely mount Lumos LSX modules through the module glass to maintain the aesthetically pleasing low-profile appearance. Unlike traditional mounting systems, each LSX module is individually mounted, expediting installation & maintenance.

Integrated Rail System

Ensures proper module alignment every time and LSX Rail can be fastened to virtually any structure with minimal sub-components.

Integrated Wireway

The built-in LSX Rail wireway allows for easy wire management without compromising aesthetics.

Seam Weatherproofing

When used as a canopy roof, then Lumos LSX is the only module system in the industry that can be sealed with minimal hassle.

Lumos LSX solar modules are integrated into...

- Roof Mounted Home Power Systems - Freestanding Carports - Deck & Gazebo Awnings - Shelters & Canopies - Building Integrated PV (BIPV) & Custom

Designs [SolarScapes](#) **LUMOS**

The art of solar™



Lumos LSX Specifications

Model : LSX280-60M-C

Rated Power @ STC : 280W

Peak Power Voltage (Vmp) : 31.97V

Maximum Power Current (Imp) : 8.76A

Open Circuit Voltage (Voc) : 39.37V

Short Circuit Current (Isc) : 9.25A

Module Efficiency : 16.2%

Operating Temperature : -40 °C to 85 °C

Maximum System Voltage UL : 1000 V / IEC 1000 V

Maximum Series Fuse Rating : 15 A

Power Tolerance -0/+3%

Solar Cell : Monocrystalline 6" x 6" (156 mm x 156 mm)

Number of Cells : 60 (6 x 10)

Bypass Diodes : 3

Module Dimensions : 65.5" x 41.0" x 1.1" (1664 mm x 1040 mm x 27 mm)

Module Area : 18.65 ft² (1.73 m²)

Module Weight : 62.6 lb (28.4 kg)

Module Weight / Area : 3.36 PSF (16.40 kg/m²)

System Weight / Area Portrait : 3.77 PSF (18.41 kg/m²)

Landscape : 4.03 PSF (19.68 kg/m²)

Front Glass : 0.24" (6 mm) FT Low-Iron PV Glass

Backsheet : Clear

Light Transmittance : Portrait = 12% Landscape = 10%

LSX Rail Assembly Options :

3, 4, 5 & 6 Portrait Module Lengths

2 & 3 Landscape Module Lengths

Output Cables : 12 Awg. PV Wire and MC4 Compatible Connectors

Static Load : -50/+113 PSF (-2400/+5400 Pa)

Hail : Class 4 Hail Rating

Max. Diameter 2" (51 mm) at 72 mph (32 m/s)

Module Type (Fire) : Type 1

Warranty : 10 years at 90% of rated power output

25 years at 82% of rated power output

Certifications :

UL 1703

IEC 61730

IEC 61215

UL 1703 Listings

CEC (USA)

FSEC (USA)

CEC (AU)

Mounting Lumos LSX Solar Modules

Lumos LSX modules are designed to be mounted using LSX Rails. These rails feature integrated wireway, and pre-drilled through-bolt locations to make installation fast & easy. Each LSX panel is mounted individually, so unlike standard arrays, a Lumos LSX module can be removed from the array racking without disturbing the panels on either side of it.

See the the Lumos GSX model [on a major retail project in Edmonton](#)!]

Product Attributes

- Dimensions: 1 × 1 × 1 cm
- Weight: 25 kg

Product Gallery



