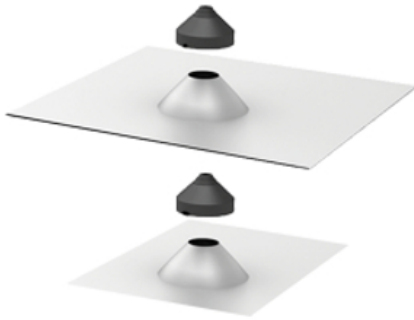


# QMCPT : Quick Mount Conduit Penetration Flashing for Tile



Price: CAD \$57.99

**SKU:** IRQMCPT-A-12

**Product Categories:** [Rooftop Racking Systems](#), [Mounts](#), [Quick Mount PV](#), [Shop](#), [Wire Management](#), [Wiring & BOS](#)

**Product Tags:** [canada](#), [conduit](#), [conduit penetration](#), [conduit penetration canada](#), [flashing](#), [penetration tile](#), [qmcpc](#), [qmcpc canada](#), [qmcpt canada](#), [qmcpt-a-12](#), [qmcpt-a-12 canada](#), [quick mount](#), [quick mount canada](#), [quickmount](#), [tile](#), [tile penetration](#)

**Product Page:**

<https://www.modernoutpost.com/product/qmcpt-quick-mount-conduit-penetration-flashing-for-tile/>

## Product Summary

This is the Conduit Penetration Flashing for tile roofs. Quick Mount PV's Conduit Penetration is a large 18" x 18" flashing for curved and flat tile roofs, and

accommodates 12", 34", or 1" diameter conduit. A quick, easy way to install a variety of conduit sizes through the roof while protecting the penetration against water intrusion with two seamless, all-aluminum spun cone flashings.

Item code: QMCPT-A-12

## Product Description

This is the Conduit Penetration Flashing for tile roofs. Quick Mount PV's Conduit Penetration is a large 18" x 18" flashing for curved and flat tile roofs, and accommodates 12", 34", or 1" diameter conduit. A quick, easy way to install a variety of conduit sizes through the roof while protecting the penetration against water intrusion with two seamless, all-aluminum spun cone flashings.

Item code: QMCPT-A-12

The innovative EPDM post collar can be easily customized to fit a 1/2", 3/4" or 1" diameter conduit. Includes top and sub-flashing to double flash tile roof penetrations for code compliance.

### QMCPT Conduit Penetration Flashing Features

- Works with all standard flat and curved tile roofs - Flashed at both deck and top level - 18x18-inch malleable top flashing with spun aluminum cone - 9x9-inch sub flashing with spun aluminum cone - 100% IBC compliant - 25-year warranty

### QMCPT Documents

[Installation Guide](#)] [Three-Course Method](#)] (Waterproofing)

## Product Attributes

- Dimensions: 31 &times; 31 &times; 6 cm
- Weight: .3 kg