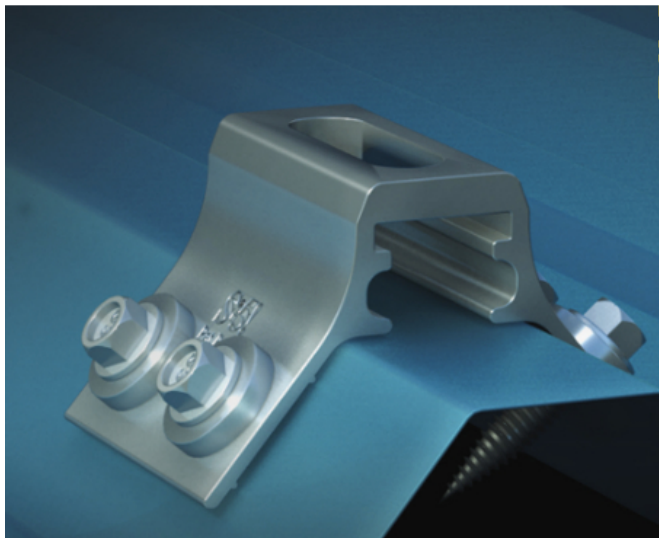


RibBracket : Metal Roof Attachment by S-5!



Price: CAD \$15.99

SKU: S5-RIBBRACKET

Product Categories: [Metal Roof](#), [Mounts](#), [Rooftop Attachments](#), [Shop](#)

Product Tags: [attachment](#), [canada](#), [corrugated](#), [metal](#), [metal roof](#), [profile](#), [rib bracket](#), [ribbracket canada](#), [roof](#), [s-5!](#), [s-5! RibBracket canada](#), [s5](#), [trapezoid](#)

Product Page:

<https://www.modernoutpost.com/product/ribbracket-metal-roof-attachment-by-s-5/>

Product Summary

RibBracket is the right way to mount almost anything onto the most common exposed-fastened, trapezoidal roof profiles marketed in North America today. No messy sealants to apply! No chance for leaks! The RibBracket comes with a factory-applied EPDM rubber gasket seal already on the base, and the S-5!®-patented reservoir conceals the EPDM from UV exposure, preventing drying and cracks.

Product Description

RibBracket is the right way to mount almost anything onto the most common exposed-fastened, trapezoidal roof profiles marketed in North America today. No messy sealants to apply! No chance for leaks! The RibBracket comes with a factory-applied EPDM rubber gasket seal already on the base, and the S-5!®-patented reservoir conceals the EPDM from UV exposure, preventing drying and cracks.

Installation is simple! The RibBracket is mounted directly onto the crown of the roof panel, straddling the profile. No surface preparation is necessary; simply wipe away excess oil and debris, align, and apply. Secure through the pre-punched holes using the appropriate fasteners

or Bulb-tite rivets for the supporting roof material.

RibBracket is the perfect match for the [S-5-PV Kit](#)], or any other ancillary application, without worrying about cold bridging! RibBracket is extremely economical and facilitates quick and easy installation.

The slotted top hole, which accommodates standard M8 nuts and bolts, simplifies alignment and maximizes flexibility in attaching ancillaries.

RibBracket with Solar

Use an M8 Nut & Bolt to attach an L-Foot to the top of the RibBracket. This L-Foot will then attach to your selected rail system.

Download the RibBracket Spec Sheet

RibBracket Spec Sheet

Product Attributes

- Dimensions: 8 × 8 × 4 cm
- Weight: .2 kg

Product Gallery

